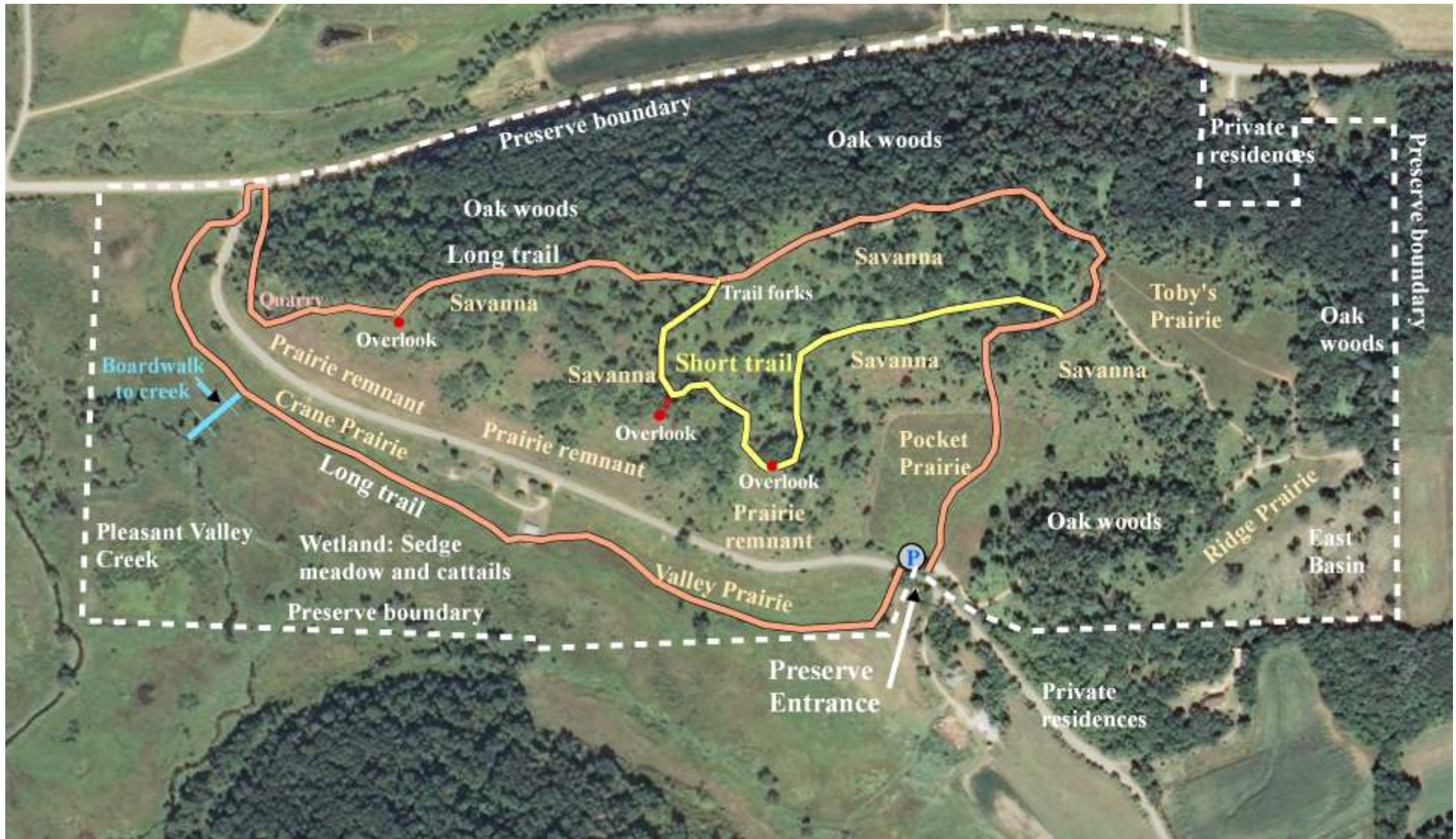


Public trail map: Pleasant Valley Conservancy



Long Trail: 1.5 miles; 1.5-2 hrs

Short Trail: 0.6 miles; 30 min-1 hr

Both trails are generally mowed but have some steep parts

Please stay on trail!

**Do not pick plants or seeds
Hunting by permission only**

**Please park off road facing the Pocket
Prairie entrance**

ArcGIS graphic by Tom Brock

Kathie and Tom Brock
608-238-5050
tdbrock@charter.net
kmbrock@charter.net
<http://PleasantValleyConservancy.org>